

HOW TO WEAR A FACE MASK

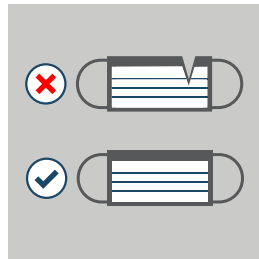


DONNING OR PUTTING ON THE MASK

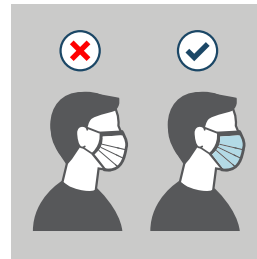


Wash your hands with soap and water for at least 20 seconds.

Dry your hands with a clean paper towel and throw the paper towel away.



Check surgical masks for any defects and throw away defective masks.



Make sure mask exterior faces out.



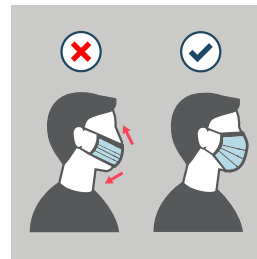
Place mask on your face. If mask has a bendable edge, put it on your nose.



Put one loop around each ear or tie the upper ties behind your head with a bow.



Pinch the bendable top edge of the mask around the bridge of your nose. Tie the lower ties behind your head with a bow.



Make sure the mask covers your nose and mouth so that the bottom edge is under your chin.



Wash your hands.

DOFFING OR REMOVING THE MASK

